
We Are All:

Sisters In Stitch



The Akelej Wall Hanging

Designed by Therese Eghult



You Will Need

4 colors of Must-have by

Yarn and colors:

A: Pearl (043)

1 skein, used 5 gram

B: Birch (004)

1 skein, used 50 gram

C: Limestone (009)

1 skein, used 12 gram

D: White (001)

1 skein, used 50 gram

Tools:

A 3 mm hook

A 50 cm long dowel rod

15 x 10 mm wooden balls

with hole (attachment

to the dowel rod)

5 x 20 mm wooden balls

with hole (the tassels)

A small animal brush

(the tassels)

You can use most types of yarn for this wallhanging.
However, we suggest a cotton for the best structure and stitch definition.

Skill level: Adventures Beginner

Measurements:

A single flower = 10 x 10 cm.

The floral section = 50 x 50 cm.

The drop = 115 cm long from the
top of the hanging string to the
bottom of the lowest tassel.



Abbreviations

US-terminology

st - stitch

rnd - round

BP- Back Post

fo - Fasten Off

end your rnds with an invisible join to the 2nd stitch

ch - chain stitch

ch sp - chain space

sl st - slip stitch

sc - single crochet

hdc - half double crochet

dc - double crochet

p - picot

chain 2, then slip stitch through
the brackets of the previous st

pop - popcorn

Work 4 dc into same stitch, remove the hook, insert it
back in first of the 4 dc:s and pick up working loop, pull
it through and close with 1 ch (does not count as a st)

***Please note that all rounds starts with a standing
stitch.***

The Pattern

The flowers

For this first part; we are going to work 15 little flowers up until the next to last round and then on the last round we will be joining them as we go.

Rnd 1.

work 12 hdc into a mc, fo

- 12 hdc

Rnd 2. *Join yarn B in any hdc*

*1 sl st + ch8, skip 1 st; rep from * til end, fo

- 12 sl sts, 12 ch8-sps

Rnd 3. *Work only in the ch8-sps from rnd 2, join yarn C in any given*

**Twist the ch8-sp to the left and work* 2 sc + ch5 + 2 sc around the top loop just created, ch3; rep from * til end, fo

- 24 sc, 6 ch5-sps, 6 ch3-sps

Rnd 4. *Working both in rnd 2 and 3; join yarn D in any hdc from rnd 2 that already holds a sl st*

**On the left side of the sl st in the htr from rnd 2 make* 1 pop + ch1, sc in the next 2 sts from rnd 3, 1 hdc + 4 dc + ch1 + 4 dc + 1 hdc around the next ch5-sp from rnd 3, 1 sc in the next 2 sts from rnd 3, ch1; rep from * til end, fo

- 6 pop, 24 sc, 18 ch1-sps, 12 hdc, 48 dc

Tip! Share your makes and be inspired by others:

#AkelejWallHanging

@SistersInStitch

@Crochetedbytess

The joining

Now it's time to begin the second part of the Akelej Wall Hanging: joining all flowers together.

The flowers are to be joined horizontally in rows: 5 flowers in row 1, 4 in row 2, 3 in row 3, 2 in row 4 and 1 in row 5.

Flower 1.

rnd 5: *Join yarn C in any ch1-sp between two sets of 4 dc*

*2 hdc + p + 2 hdc around the next ch1-sp, 1 BPhdc around the next 5 sts, 1 BPsc around the next st, skip the next 4 sts, 1 BPhdc around the next 5 sts, 1 BPsc around the next st; rep from * til end, fo

- 24 hdc, 6 p, 60 BPhdc, 12 BPsc

Flower 2-15

Follow the instructions for completing rnd 5, but when you reach a point that needs to be joined to another flower (see the attachment chart on the next page); work the picot as normal whilst **adding** a slip stitch **through** the other flowers picot **before** making the second chain stitch.

The joining corners are worked as followed around a ch1-sp: 2 hdc + (ch 1 + join to the other flower with a sl st + ch 1 + 1 sl st through the brackets of the previous stitch) + 2 hdc.

Row 1:

Flower 1. No attachment points

Flower 2-5. 2 attachment side points to the left

Row 2:

Flower 1. One attachment point to the top

Flower 6-9. One attachment point to the top and 2 to the left

Row 3:

Flower 1. One attachment point to the top

Flower 10-12. One attachment point to the top and 2 to the left

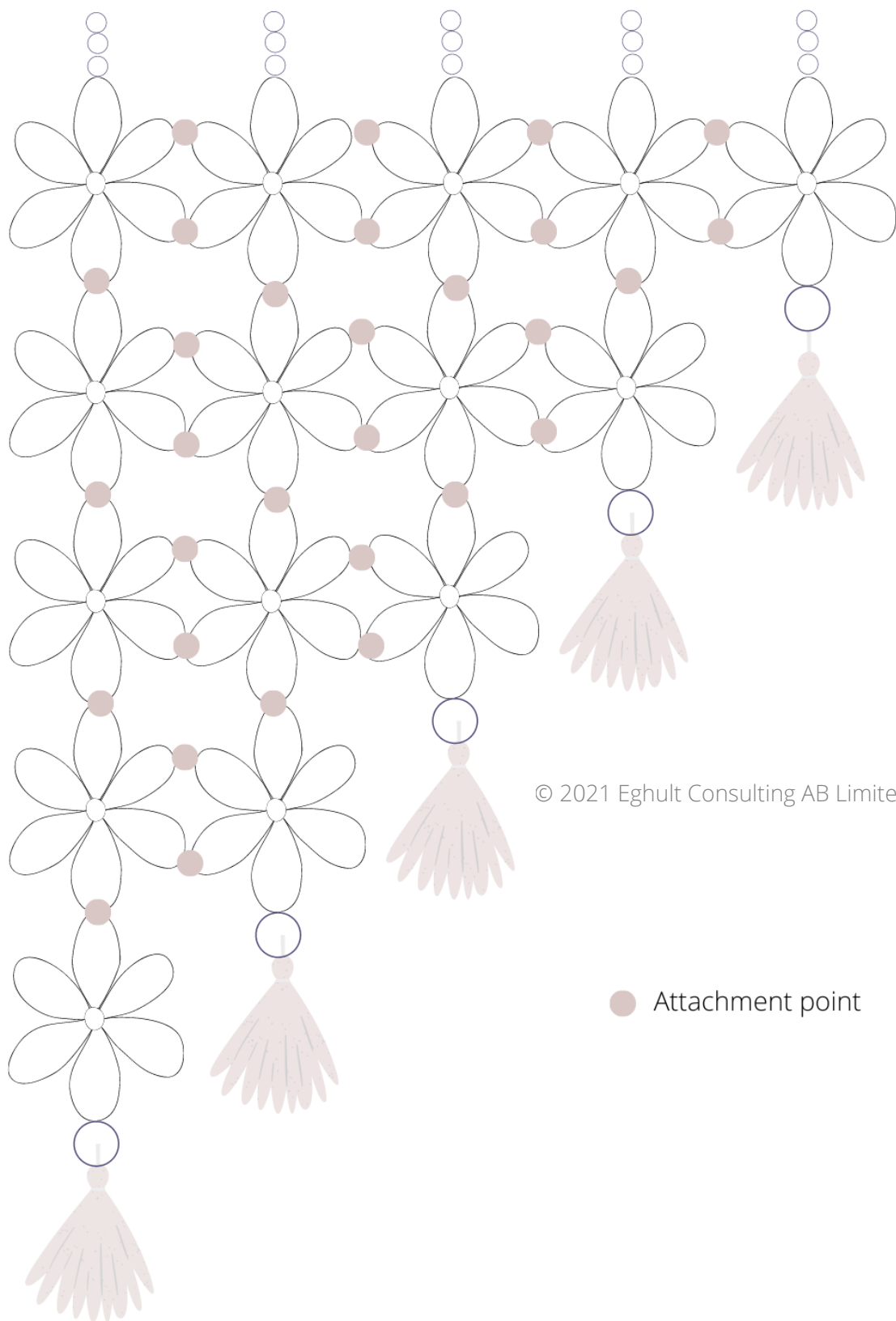
Row 4:

Flower 13. One attachment point to the top

Flower 14. One attachment point to the top and 2 to the left

Row 5:

Flower 15. One attachment point to the top



© 2021 Eghult Consulting AB Limited

● Attachment point

The assembly

For the third and final part we are going to add the finishing touches to our wall hanging; attaching it to a dowel rod, adding tassels and finally creating the hanging.

All parts will be worked in your color B yarn.

Part 1. Attaching your crocheted piece to the dowel rod

Begin with using the long thread left from row 4; stitch together the short sides as neatly as possible with the mattress stitch.

Repeat the following 3 steps for all 5 top row flowers (i.e. flowers 1-5):

Step 1. Thread your yarn on a darning needle and attach through the top picot of your flower.

Step 2. Thread a 10 mm bead over both yarn ends and tie a double knot as close to the bead as possible; repeat 3 times.

Step 3. Create an approximately 3 cm tall loop by tying a double knot around your dowel rod.

Try to make your attaching as even as possible by measuring whilst tying it to the dowel rod, this will ensure it to hang straight once placed on the wall.

Part 2. Making the tassels

Repeat all steps to create and attach the 5 tassels:

Step 1. Wrap the yarn 35 times around the short side of a pocket book, (they'll need to be approximately 13 cm tall when finished).

Step 2. Cut a 35 cm long piece of your yarn and tie a double knot around the top of your tassel tightly before removing it from the pocket book.

Step 3. Cut a 20 cm long piece of your yarn and tie approximately 1 cm down from the other knot; creating a head.

Step 4. Use a pet brush to the finished tassel roughly to create a more raw look and feel to them.

Part 3. Attaching your tassels

Thread a 20 mm bead on the yarn ends on top of a tassel and attach through the bottom picot of a flower (i.e. number 5, 9, 12, 14 and 15). Secure with a double knot tied on the backside of the flower and then use a darning needle to bring the ends back down inside the bead down into the tassel head and out in the tassel body.

Trim and give a finishing brush to add some raw texture to them.

Part 4. The hanging of The Akelej Wall Hanging

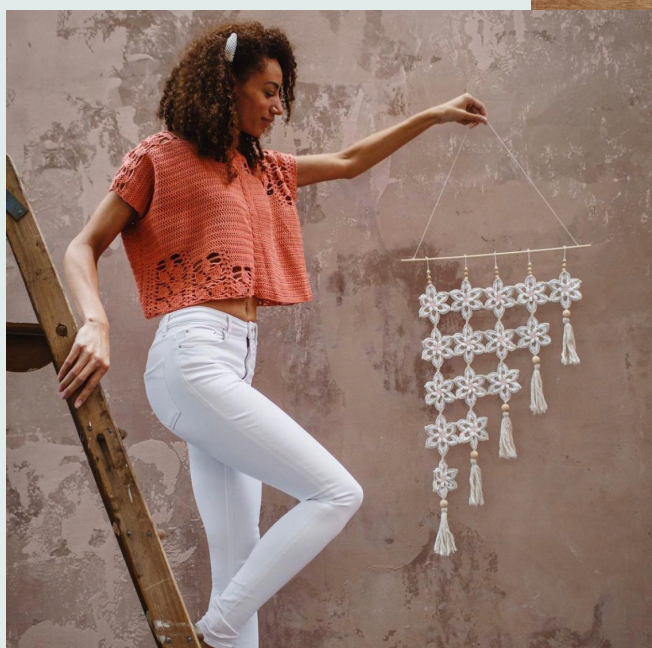
For the hanging you will begin by cutting your yarn to a length of about 80 cm. Then simply tie the yarn in tight knots on each end of your dowel rod, trim the ends and then hang it on a nail on your wall.

*Your Akelej Wall Hanging
is now finished!*



Inside Crochet Magazine

THE BOTANICAL ISSUE 123



For more info & crochet fun:

www.SistersInStitch.com



Until next time...

© 2021 Eghult Consulting AB Limited • All rights reserved.

No part of this pattern may be published, resold, reproduced (in any form or by any means, electronic or mechanical, by photo copying, recording or otherwise), shared, translated or altered without prior permission in writing from the copy right holder.

All copy right infringements will be pursued.